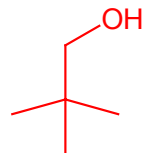
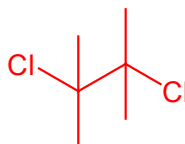
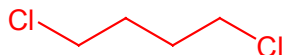
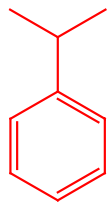


Practice Exam 6ii - Answers

1. C, F, K, O, S, X, AA, CC

2.



Empirical formula : C_2H_4NO – this cannot be the molecular formula

Molecular formula: $C_4H_8N_2O_2$

SODAR = 2

3.

$C_{10}H_{12}O_2$

Sodar = 5

$C=O$, $C-O$

Ester, or aldehyde/ketone + ether

8

4 - you know the downfield signal is due to a $C=O$ (from IR)

yes

3

5

2:2:2:3:3

d, t

ethyl, aromatic

4

2

